

# ESAprro V8 installation guide

## Table of contents

---

Index .....	3
Installation Modes .....	4
Local Installatation .....	4
Network Installation .....	8
Network installation (details) .....	9
System Requirements .....	17
Warning and uninstalling .....	18
Server connection problem .....	19

# ESApr V8 Installation Guide

---



## Welcome to ESApr V8 Installation Guide

Here you can find all information for installing and configuring ESApr V8.

For further information ask:

ESApr s.r.l. Via Via F.Dassori, 49/4 16131 Genova Ph: (+39) 010/311544 Fax: (+39) 010/313606

Email: [support@esain.com](mailto:support@esain.com)

web: [www.esain.com](http://www.esain.com)

### ATTENTION:

Disable the antivirus and run the setup with an administrator user.

## Installation Modes

---

## Installation Modes

---

ESApró provides two different installation modes:

### [Local Installation](#)

The program is installed and executed on a single PC (this mode is suitable for single-user installations).

### [Network Installation](#)

The program is installed and executed on a shared folder (this mode is suitable for multi-user installations).

---

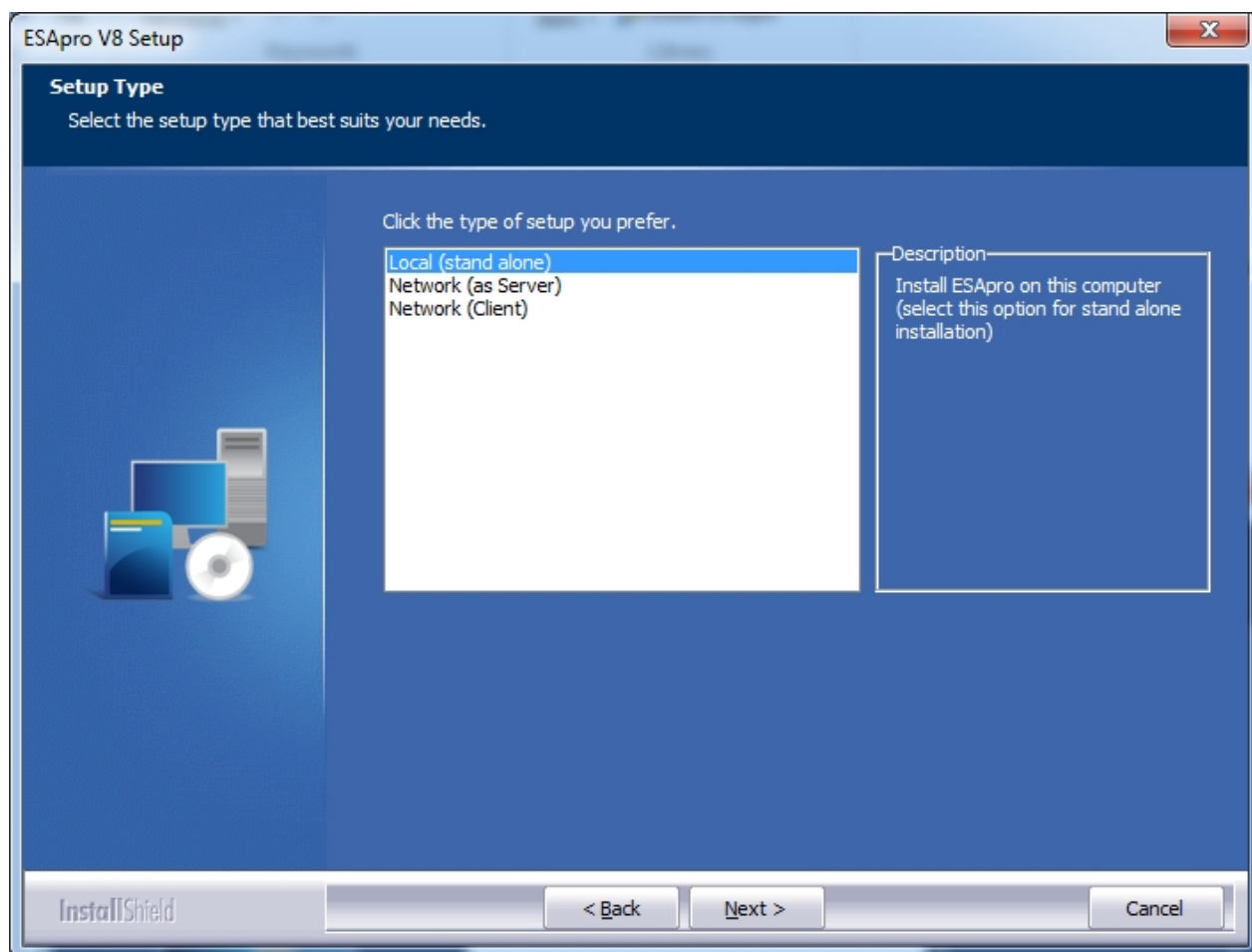
## Local Installation

## Local Installation

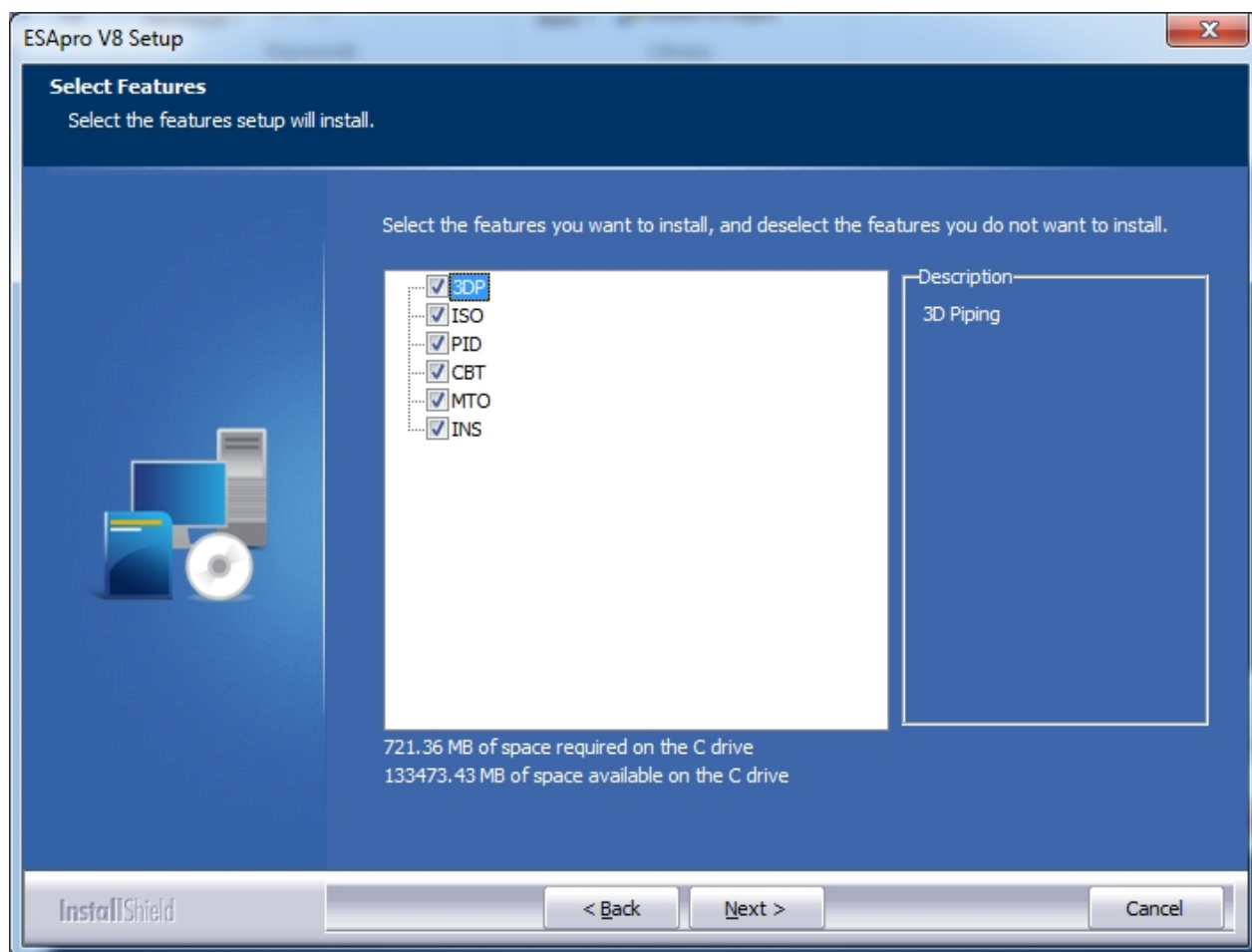
---

### Installation on a Standalone PC

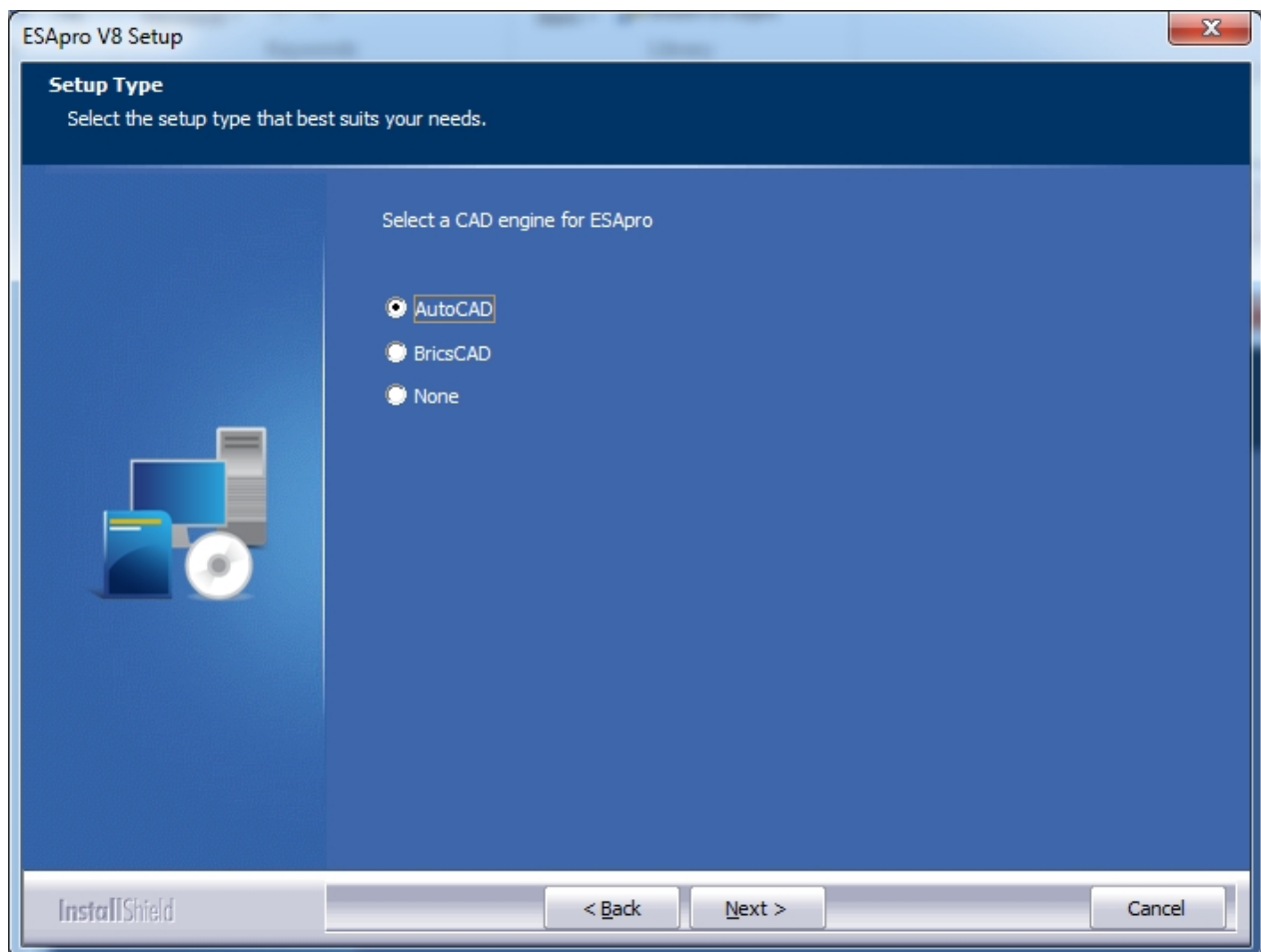
- Once viewed the licence agreement information, in the “**Setup Type**” window select “**Local (stand alone)**” and click **Next**.



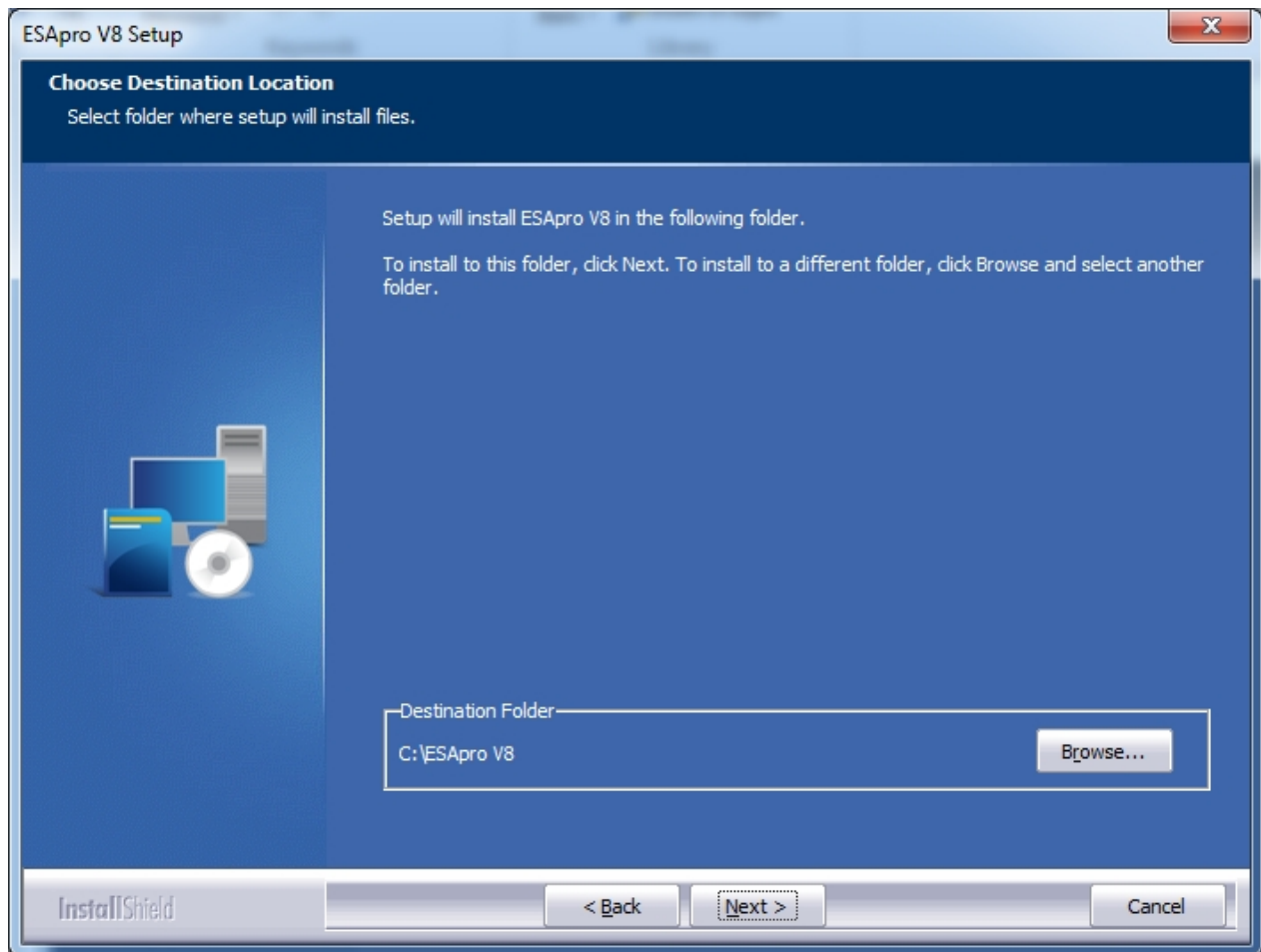
- In the “**Select Features**” window select ESAPro’s modules you want to install and click **Next**.



- In the “**Setup Type**” window select a CAD engine to use with ESAPro and click **Next**.



- Specify the installation path (e.g. "C:\ESapro V8") and click **Next**.



Once performed installation links will be created on the Desktop to enable you to launch the installed modules.

---

## Network Installation

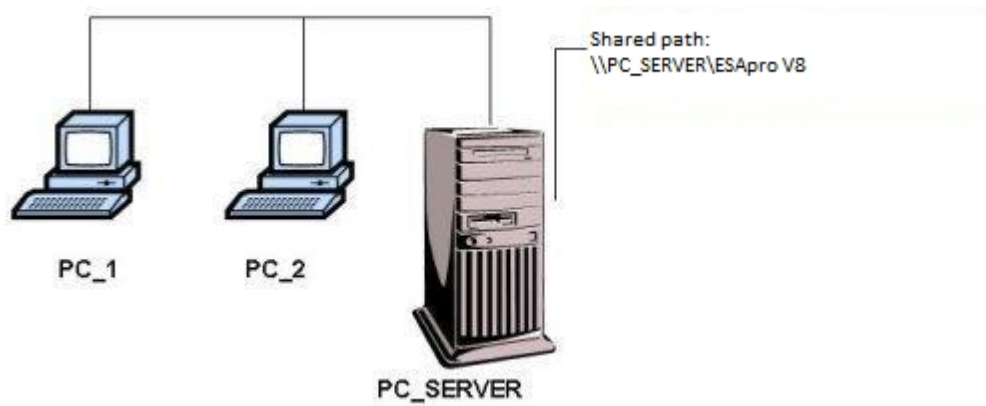
# Network Installation

---

ESAPro has been designed to be used by more users within a network. The main benefit of operating in network is represented by the possibility of centralizing the management of specifications, tables and material lists.

Sharing ESAPro in a network basically means to manage the loading of the program of each workstation from a single shared folder. Said folder is usually created on the company server (see Figure 1).





**Figure 1** - Dedicated server configuration

For further information about the network installation see:

[Network installation \(details\)](#)

---

**Network installation (details)**

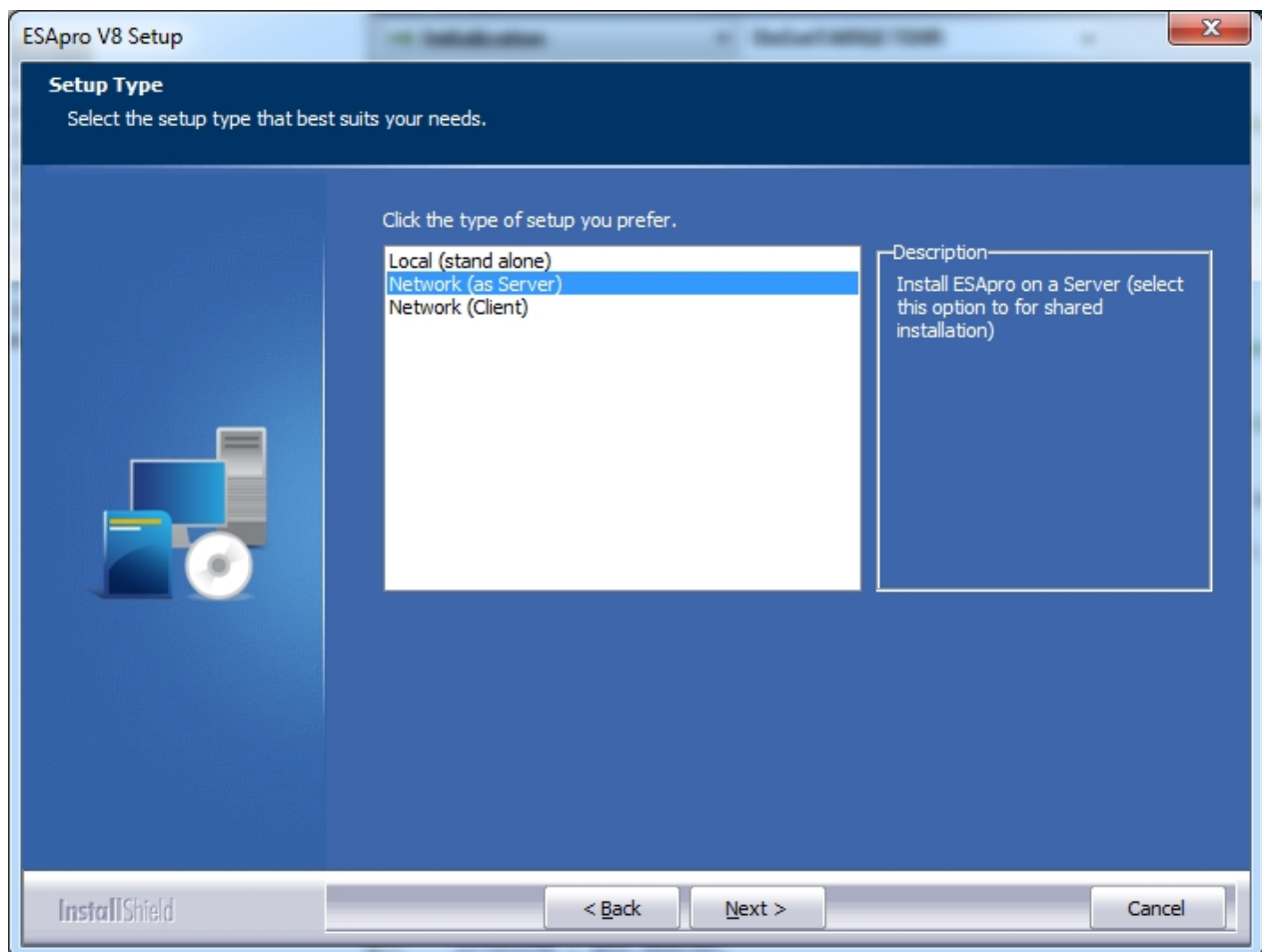
## Network installation

---

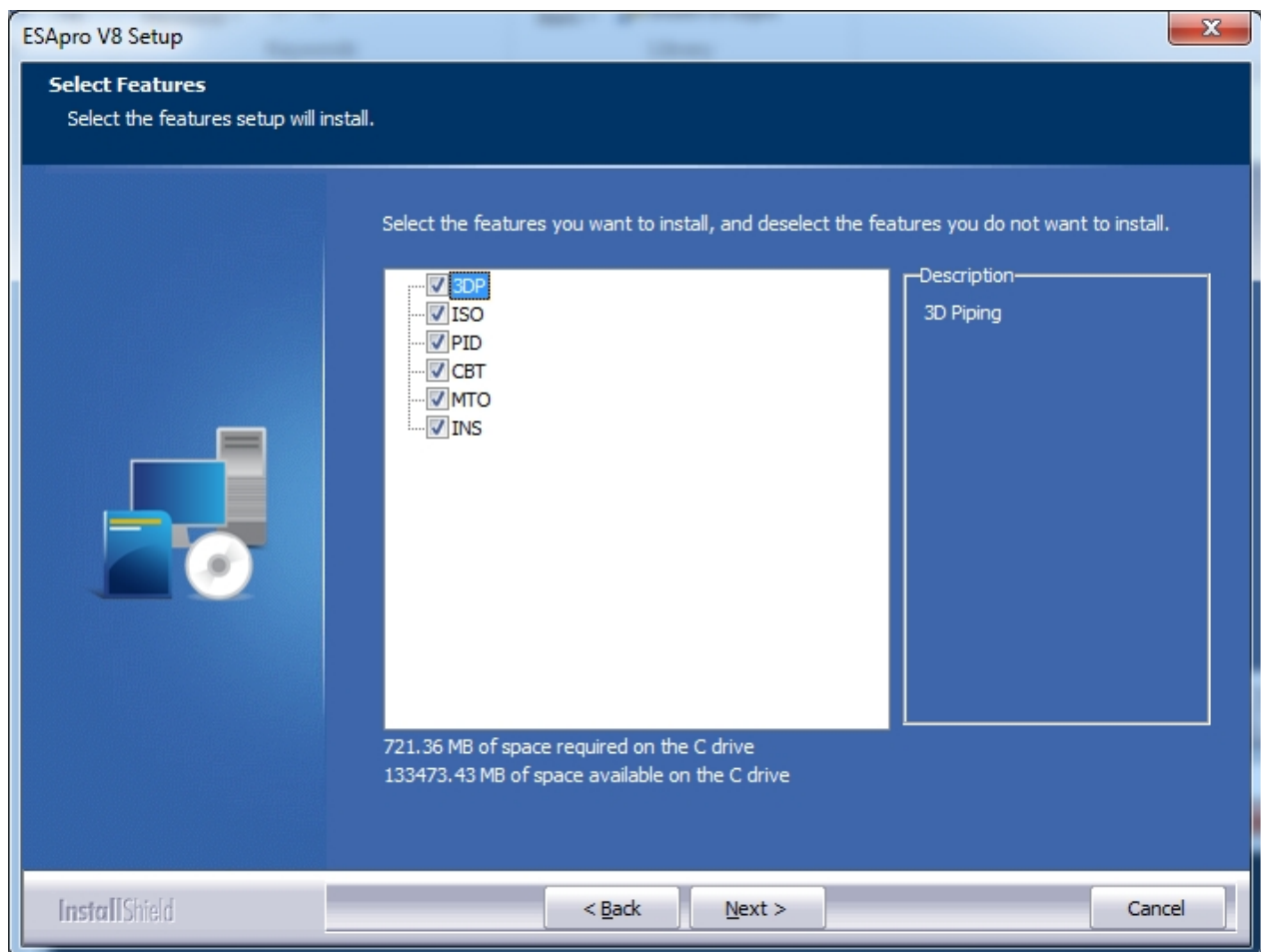
In order to install ESapro with dedicated Server follow the instruction below:

### Installation on Server

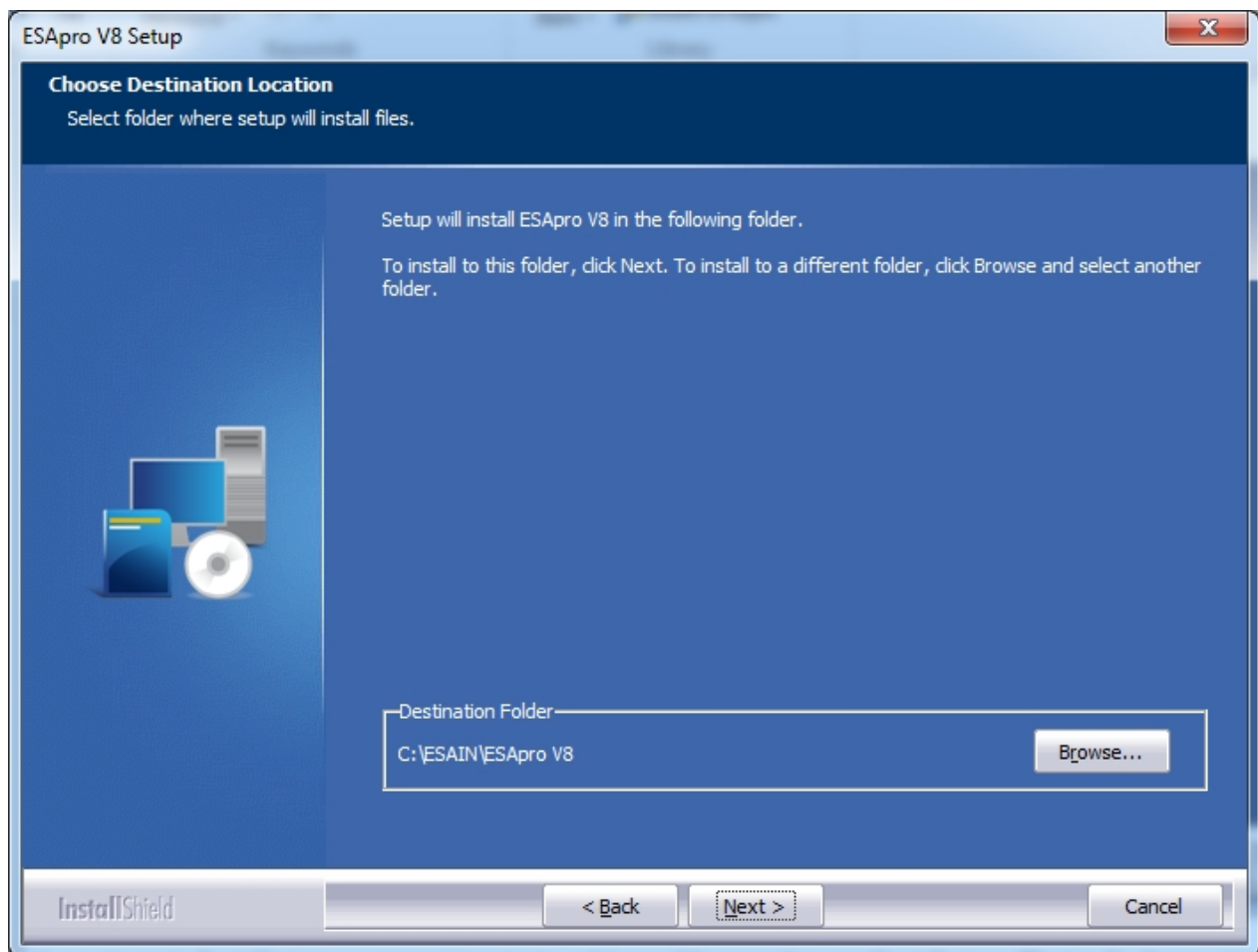
- Once viewed the licence agreement information, in the “**Setup Type**” window select “**Network (as Server)**” and click **Next**.



- In the “**Select Features**” window select ESAPro's module you want to install and click **Next**.



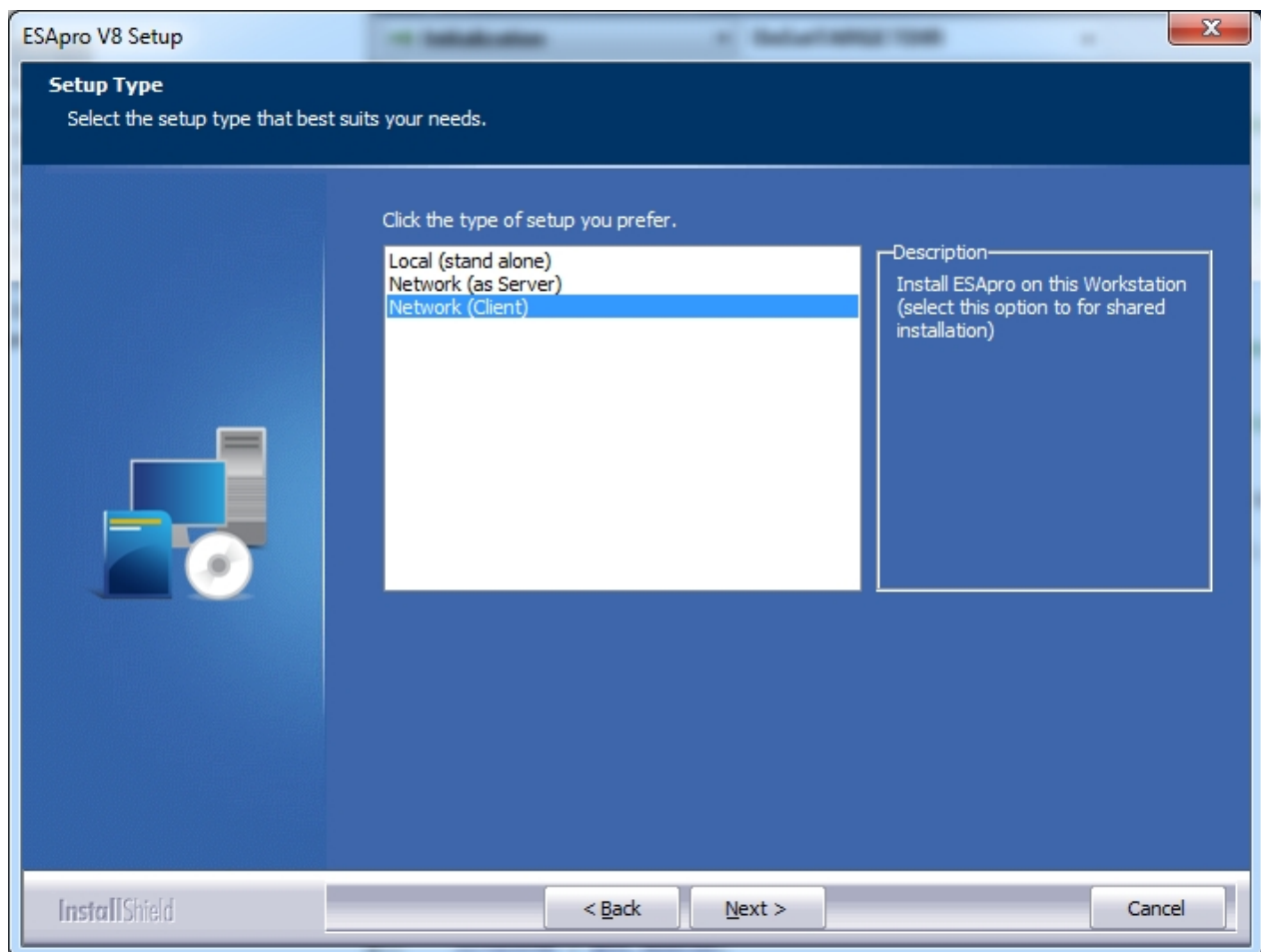
- Specify an installation path that must be shared to all workstations (e.g. "C:\ESAIN\ESAPro V8") and click **Next**.



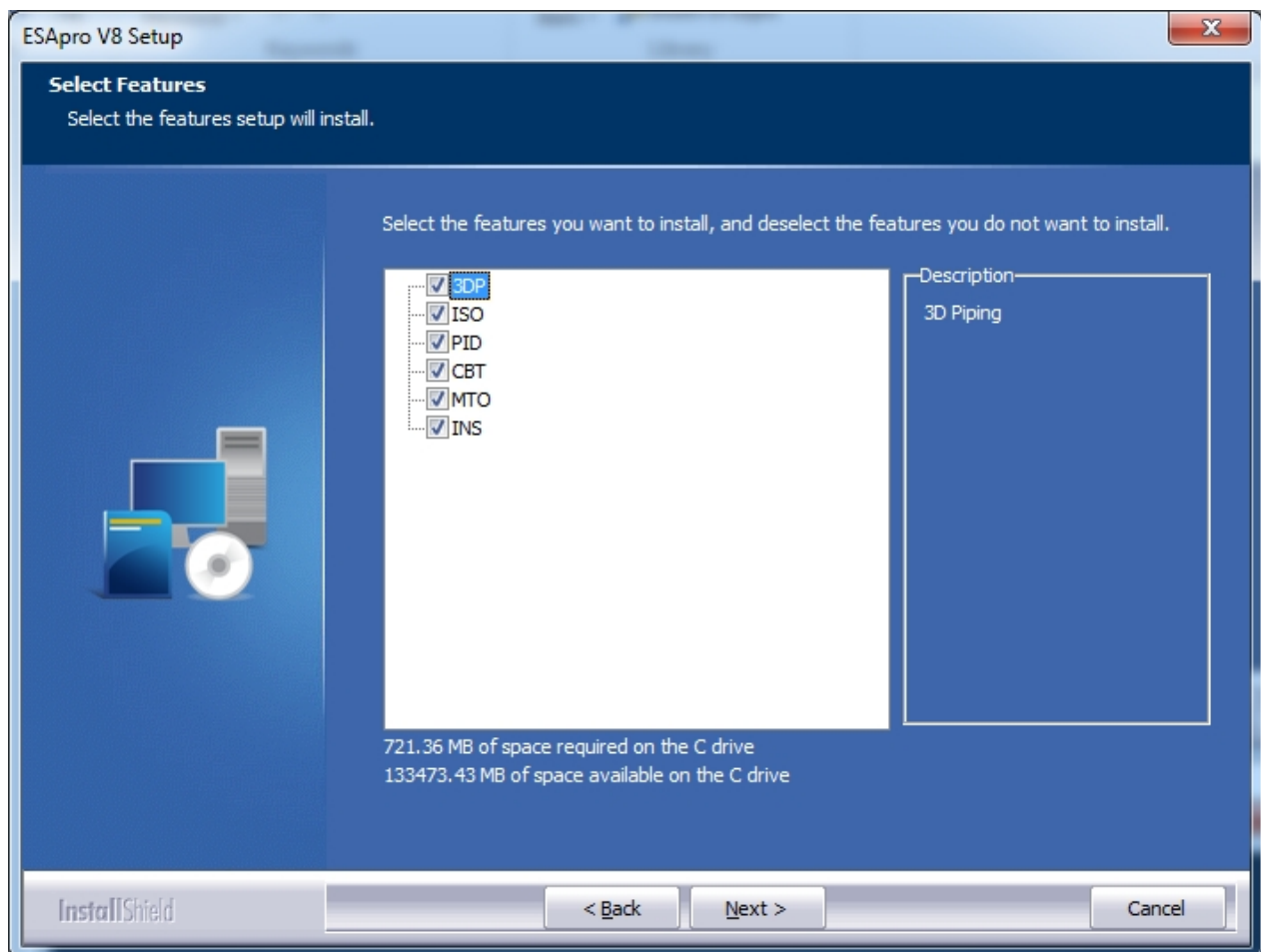
The Server installation is ended.

## **Installation on Workstation**

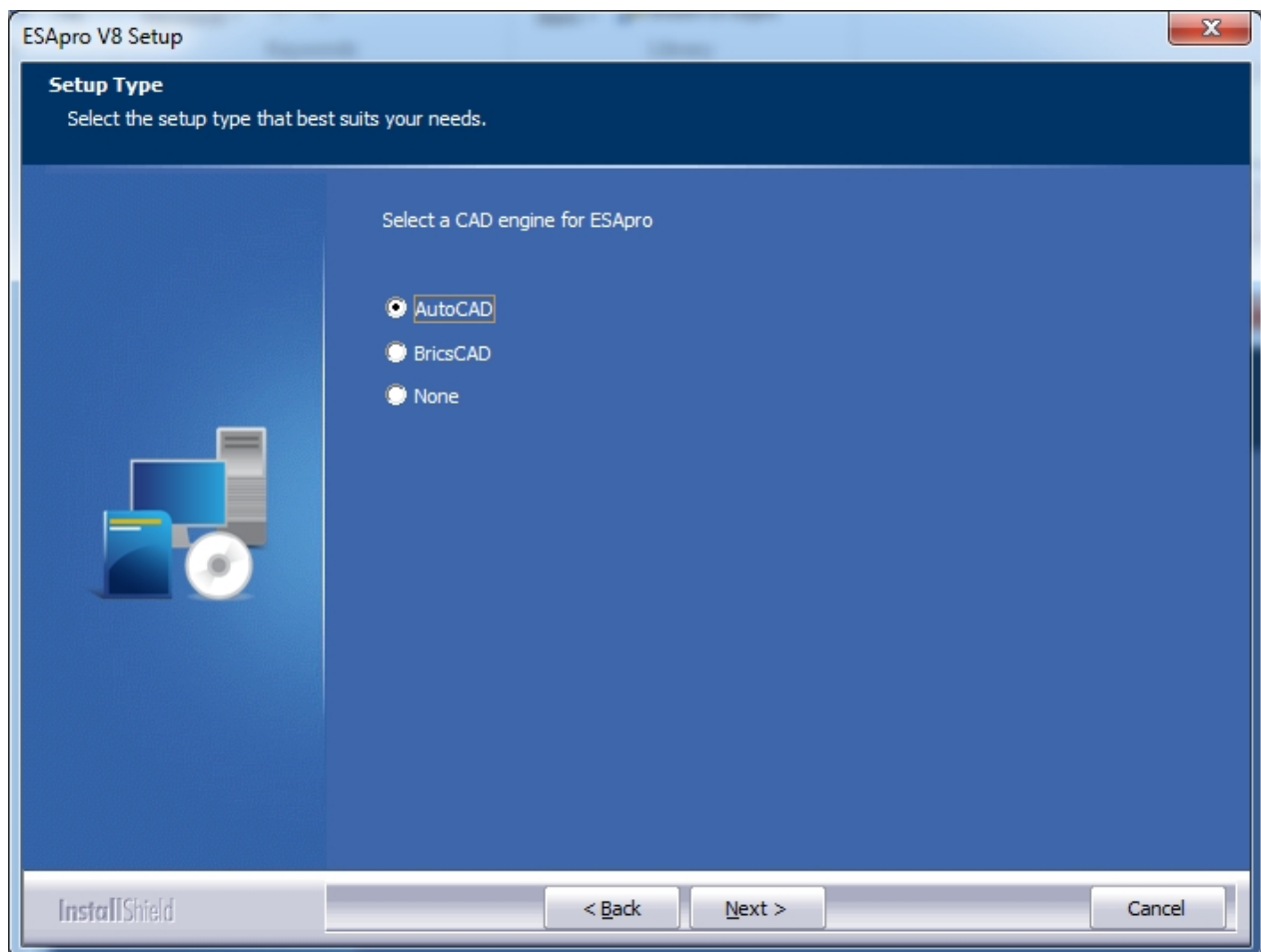
- Once viewed the licence agreement information, in the “**Setup Type**” window select “**Network (as Client)**” and click **Next**.



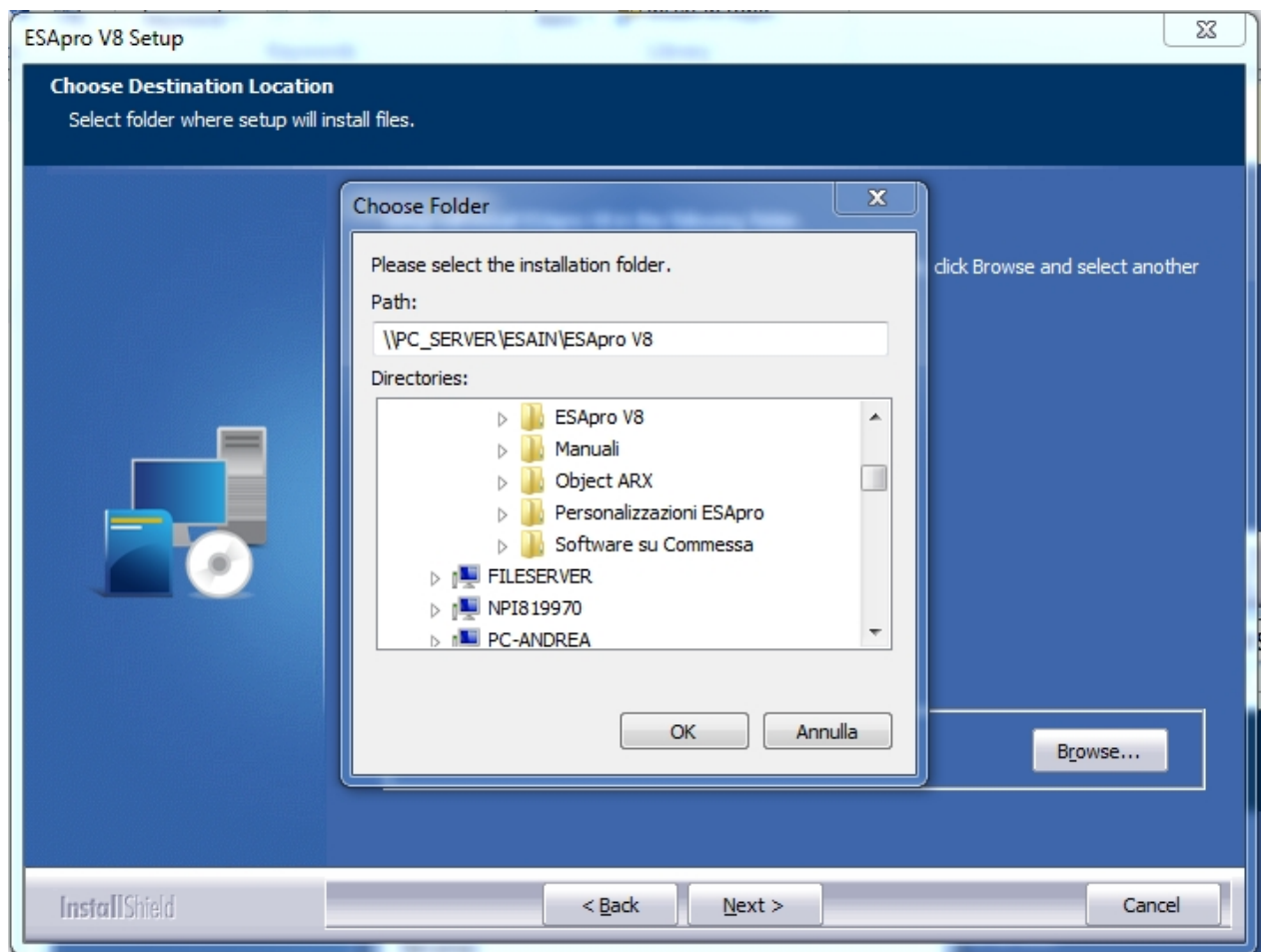
- In the “**Select Features**” window select ESAPro’s module you want to install and click **Next**.



- In the “**Setup Type**” window select a CAD engine to use with ESAPro and click **Next**.



- At the request of the Installation Path, select "**Browse...**" specify the shared folder (e.g.: "\\PC\_SERVER\\ESA\\ESAPro V8"), and click **Next**



Once performed installation links will be created on the Desktop to enable you to launch the installed modules.

[Server connection problem.](#)



## System Requirements

---

Since **ESApr** V8 programs require AutoCAD or BricsCAD, check that the CAD engine one is properly installed before proceeding with ESApr installation.  
(No CAD engine needed on server installation)

Hardware requirements are the same of CAD engine, that is:

Local or network client installation

### **For AutoCAD or BricsCAD**

- Processor 3Ghz or higher
- Microsoft® Windows® 10 **64 Bit**
- 16 Gb RAM (for Piping 3D 32Gb RAM suggested)
- 750 Mb of available space on the hard disk for AutoCAD, 500 Mb for database, approximately 50 MB for each ESApr module.
- Graphic card with a resolution of 1920x1080 con 1GB GPU, DirectX 11 compatibility (see graphics cards tested by Autodesk/Bricsys)
- Mouse

Server installation

- Processor 2Ghz or higher
  - Microsoft® Windows Server 2008R2 / 2012 / 2012R2 /2016, 2019 **64 Bit**
  - 8 Gb RAM
  - 500 Mb for database, approximately 50 MB for each ESApr module.
  - Graphic card with a resolution of 1024x768
  - Mouse
- 
-

## Warning and uninstalling

---

## Warning and uninstalling

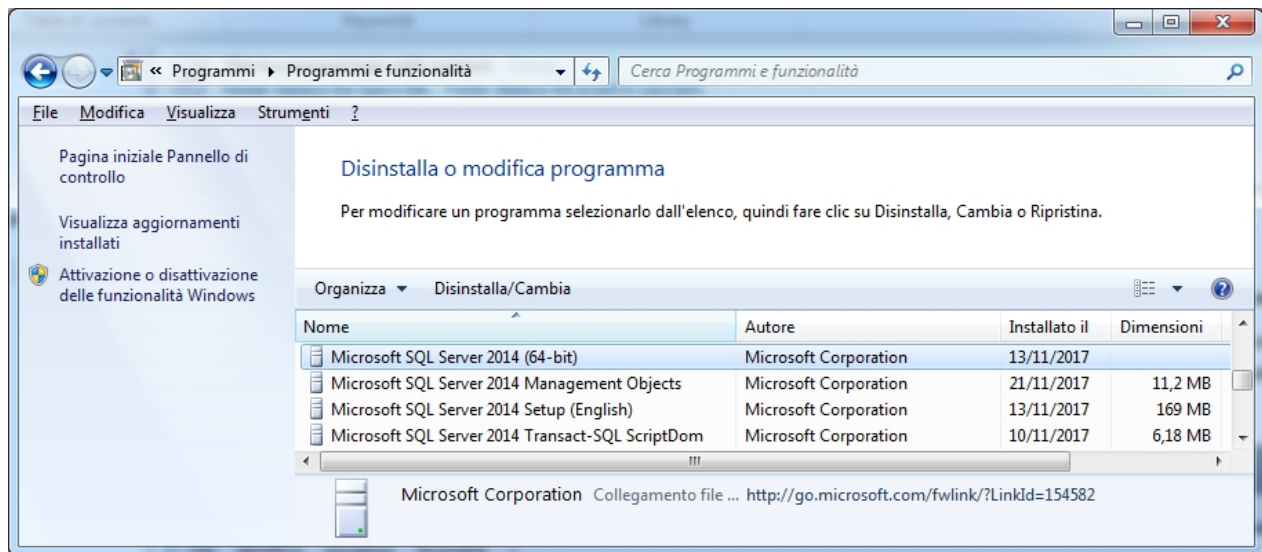
---

**ESapro V8** use **SQL Server 2014 Express Edition 64 bit** database.

Please don't copy or delete database files in **data** directory.  
Use **ESapro** function (see manual) to manipulate database.

If you want completely uninstall all **ESapro V8** modules, uninstall also all reference belongs:

**Microsoft SQL Server 2014.**



If you have more instances of **SQL Server 2014** uninstall only the one named **ESAPROV8**:

## Server connection problem

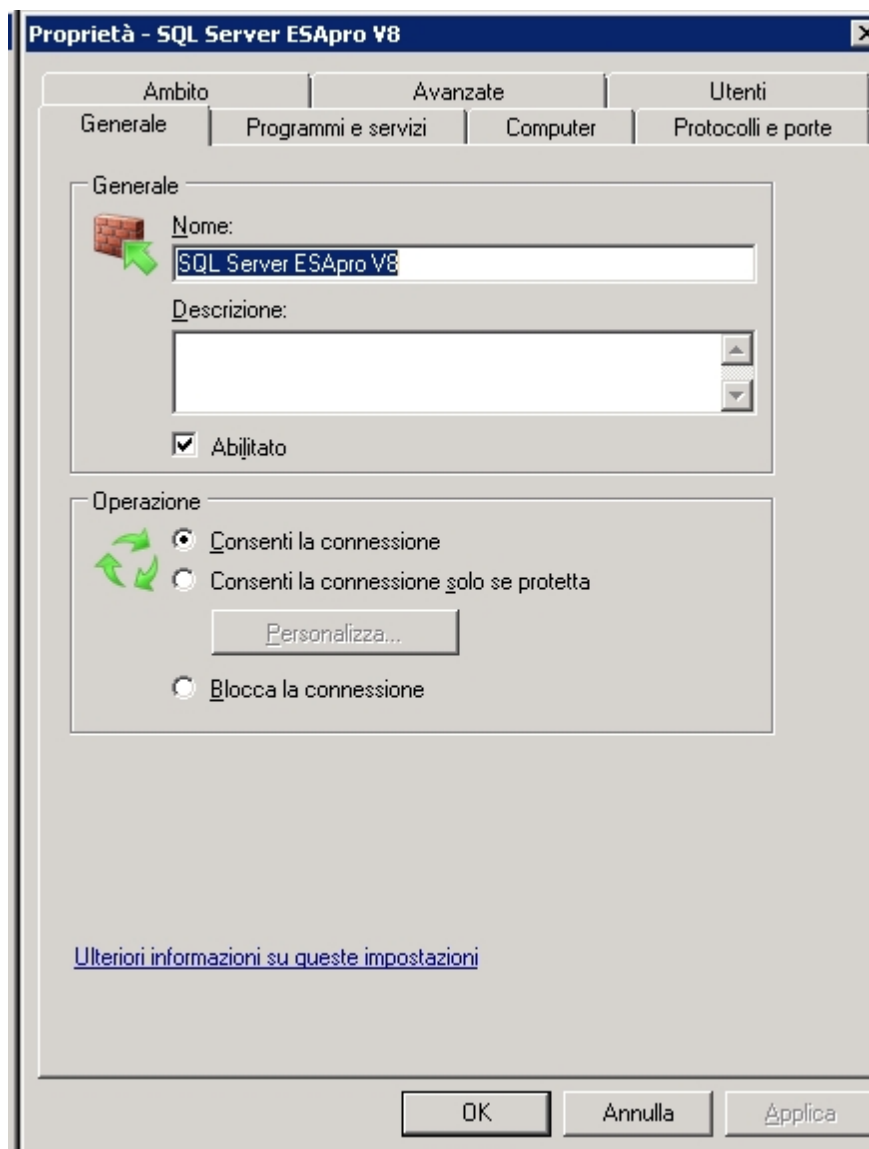
---

### Connection problem

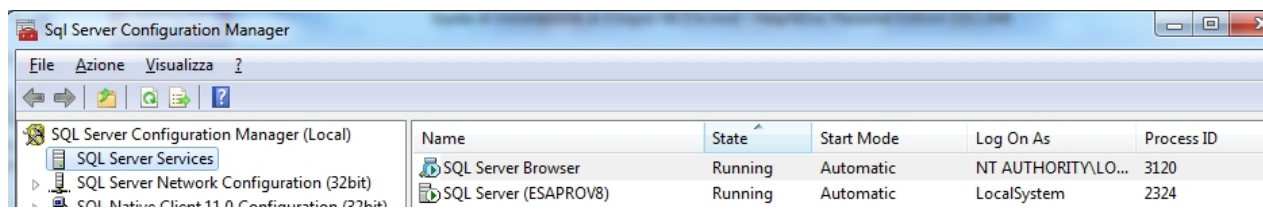
If it is impossible to connect from client to server, verify, if firewall is enabled, on server machine the exception presence of the following program:

%ProgramFiles%\Microsoft SQL Server\MSSQL12.ESAPROV8\MSSQL\Binn\sqlservr.exe

%ProgramFiles% (x86)\Microsoft SQL Server\90\Shared\sqlbrowser.exe  
(this one depends how many SQL Server instances are installed on the server)



Please verify that SQL Server ESAProV8 services are running.



Please verify that information in ESAPro.ini file located in ESAPro V8 common folder related to: Servename and Computename are the same of the PC where ESAPro is installed.

